































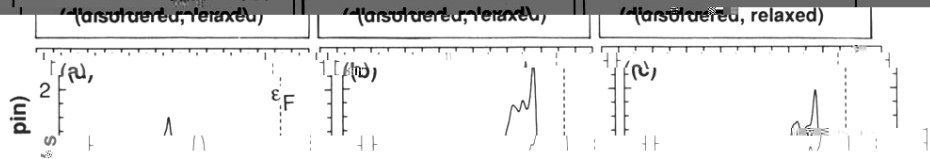


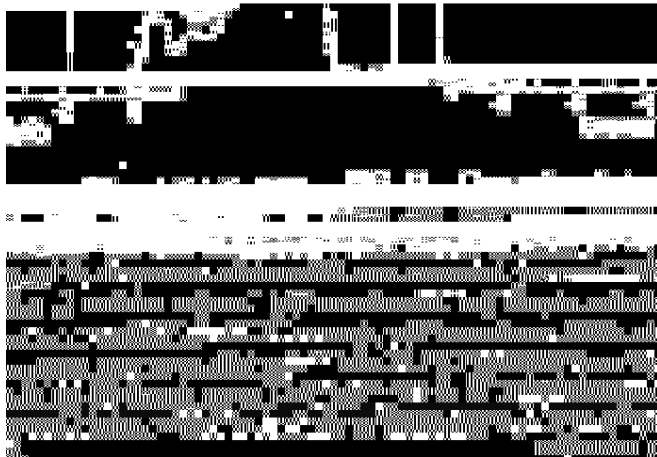
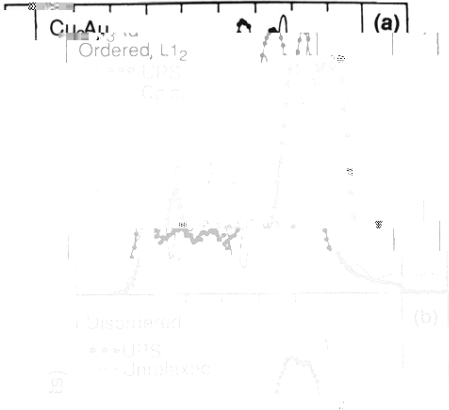






Al/TDS (0.75, 0.25) in Cu, Au, Tm, POS of Cu





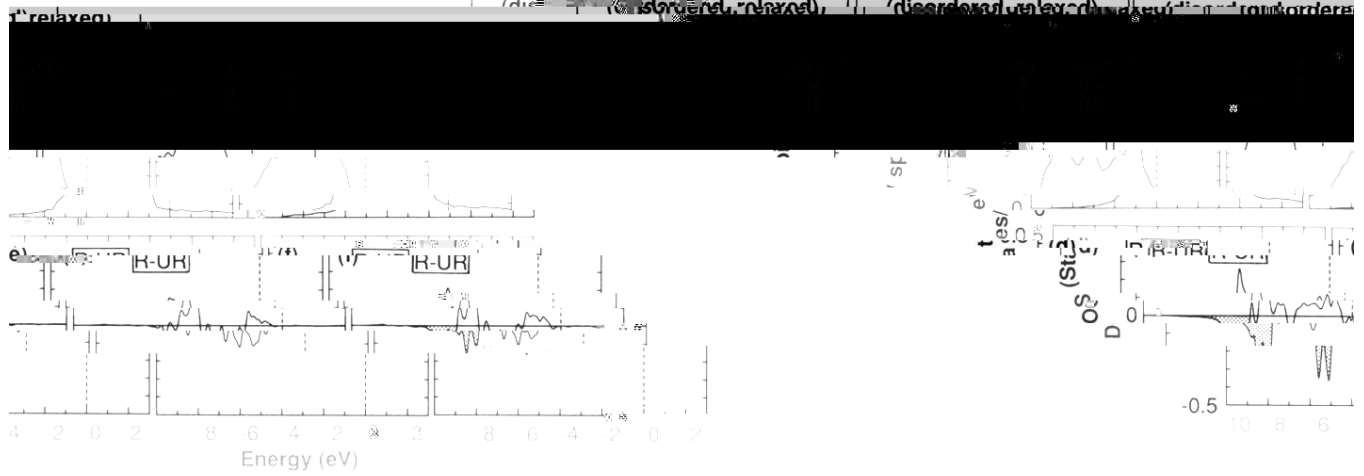
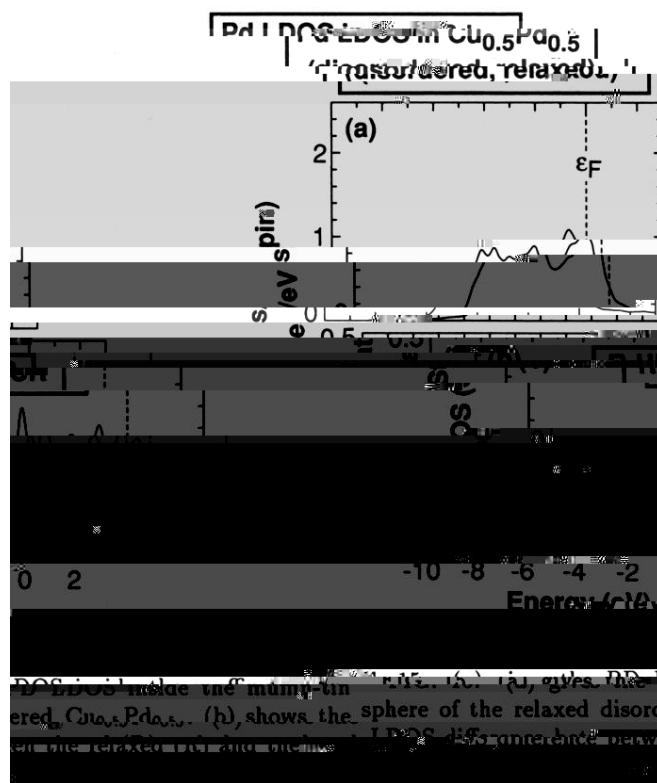


FIG. 13. (a)-(c) give the density of states (DOS) in the whole system, Ca DOS, and Pd DOS, respectively, for the disordered system. The Ca DOS is shown in (b) and the Pd DOS is shown in (c). The total DOS is shown in (a). The Fermi level is set at 0 eV.



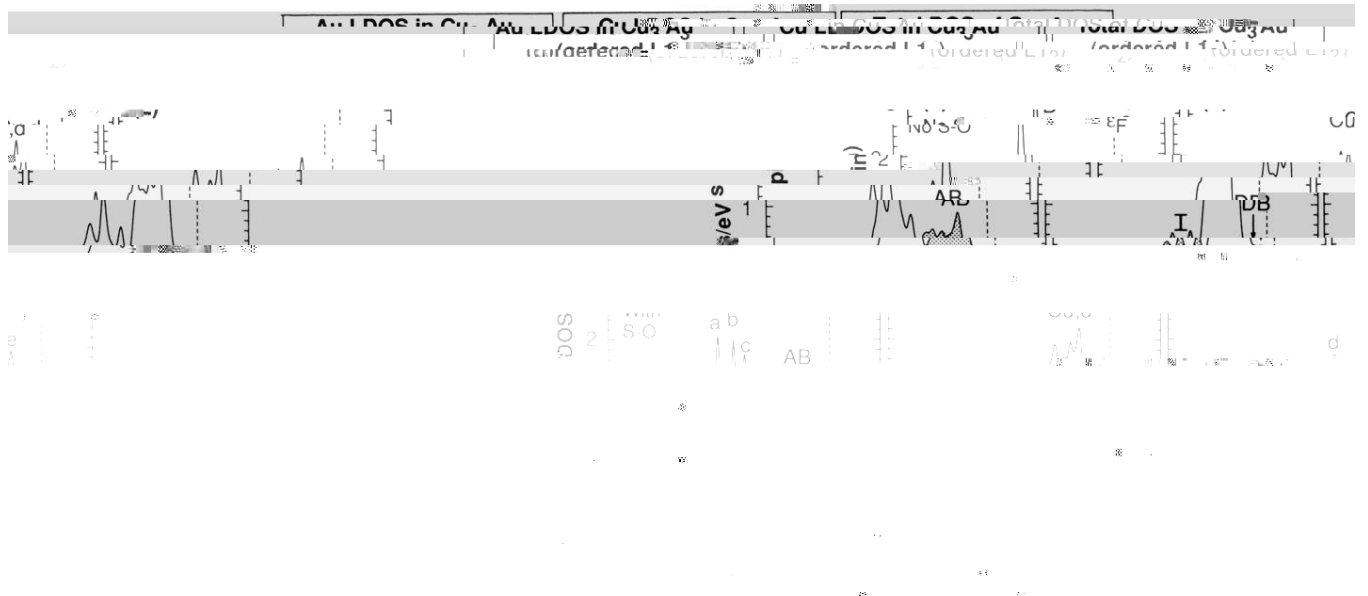


Fig. 1. DOS including spin-orbit effects. The capital letters denote the  $d$ - $d$  hybrid,  $nd$ - $d$  hybrid,  $i$ -induced,  $D$ B=dangling bond, respectively, below the case of the atoms  $a$ ,  $b$ ,  $c$ , and  $d$ , are the peak positions whose energies are given in Table III.